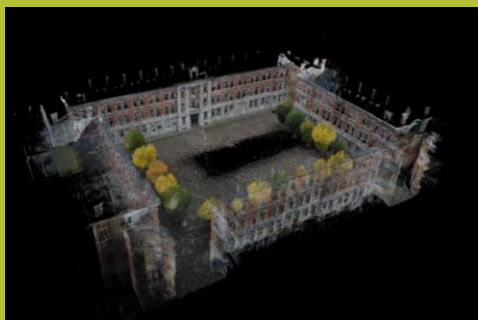


Fast mapping tools, combining data from **aerial** and **ground** based assets

UGV UAV Mapping robotics systems



Combined data from UGV/UAV robots



3D MAPPING SOLUTIONS FROM GROUND AND AIR

Accurate 3D mapping tools are provided by a number of service providers, relying on land-based (via a geodetic survey) or aerial-based (via manned or unmanned aircraft) mapping. Coming forth out of years of research on this subject in multiple research projects like ICARUS and TIRAMISU, the Unmanned Vehicle Centre is now able to present an integrated toolbox for combined ground and aerial mapping. Use this toolbox to bring together your environmental datasets, land-based and air-based.

The UVC combined mapping toolbox will automatically align and match the datasets and create an integrated 3D model with enhanced accuracy. Afterwards the combined data sets can be further processed with semantic classification and segmentation. In addition we export the data sets to any standard 3D point cloud format.



ROYAL MILITARY ACADEMY
OF BELGIUM

Royal Military Academy of Belgium
Av. De La Renaissance 30, B1000 Brussels, Belgium Tel +32 244 14106 Fax +32 244 14100
geert.de.cubber@rma.ac.be; haris.balta@rma.ac.be

WWW.MECATRON.RMA.AC.BE